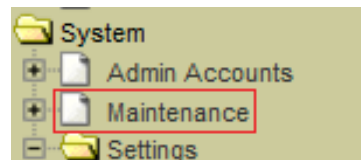


## How do I perform a backup or restoration of my gateway configuration

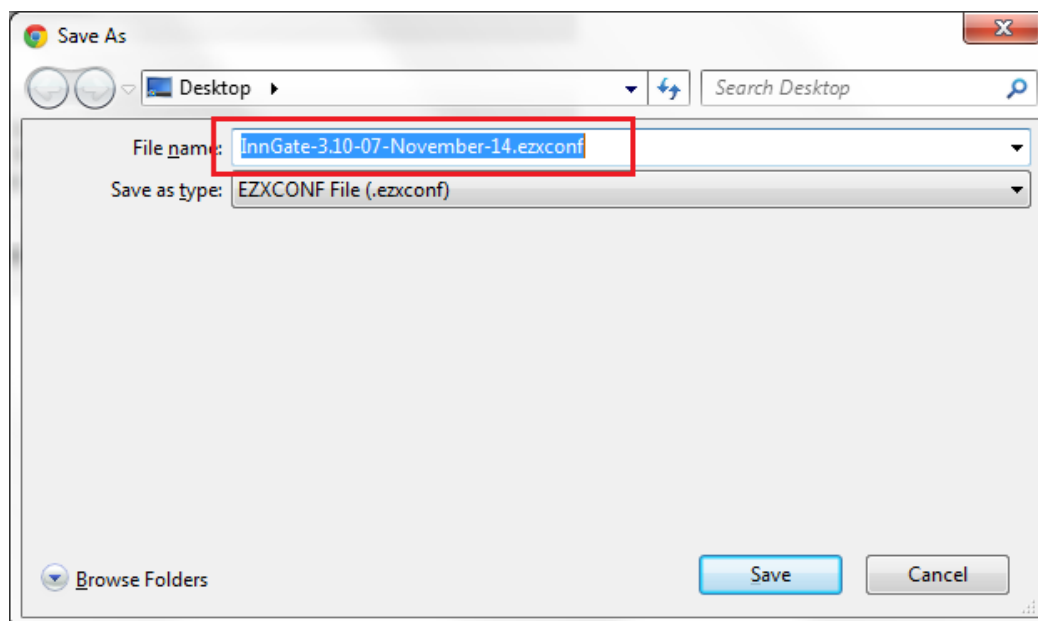
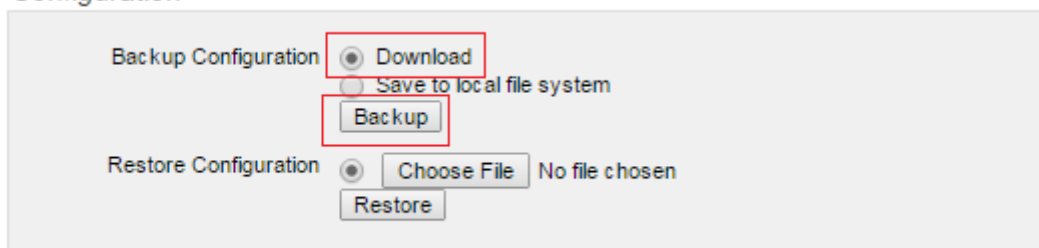
### Configure at system

Navigate to Admin GUI: System > Maintenance



### Backup Configuration

#### Configuration



Choose "Download" option to save a copy of the system's configuration into a binary-format file.

## Configuration

Backup Configuration  Download  
 Save to local file system

Restore Configuration  Choose File No file chosen  
 InnGate-3.10-07-November-14.ezxcnf ▼

Configuration saved

## Power

Restart Now

Shut Down Now

## Configuration

Backup Configuration  Download  
 Save to local file system

Restore Configuration  Choose File No file chosen  
 InnGate-3.10-07-November-14.ezxcnf ▼

You can also choose “Save to local file system” to save the configuration file in the local drive. Click button  to back up. This process normally takes less than a minute as the InnGate gathers the system configuration into a binary file.

## Restore Configuration

Configuration

Backup Configuration  Download  
 Save to local file system  
Backup

Restore Configuration  Choose File InnGate-3.1... 14.ezxcnf  
 InnGate-3.10-07-November-14.ezxcnf ▼  
Restore

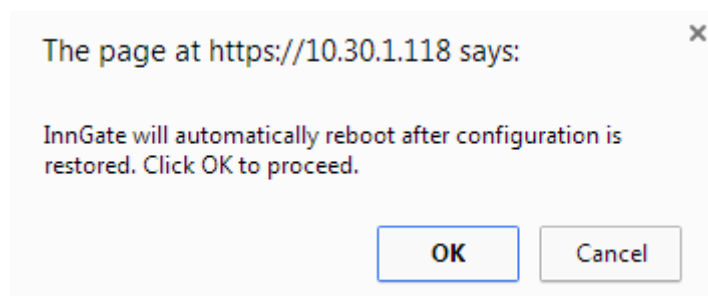
Click  to select the system configuration backup binary file to use and then click .

Configuration

Backup Configuration  Download  
 Save to local file system  
Backup

Restore Configuration  Choose File No file chosen  
 InnGate-3.10-07-November-14.ezxcnf ▼  
Restore

You can also choose to restore the configuration file in the local drive.



The gateway will reboot after configuration is restored.