

Connectivity **Made Easy**



ANTlabs

A Leading Internet Business Enabler

IG 4



IG 4 supports the needs of guest networks such as hotels, waiting rooms, business centers and F&B. It is an all-in-one gateway targeted at hospitality, has advanced bandwidth management, more authentication methods, and analytics.

For Medium to Large Hotels/Service Apartments

Model	4110	4210
Max User License	800	Unlimited*
Max VLANs	500	2,000
Max Throughput	940 Mbps	974 Mbps & 9 Gbps**
Max PPS	50,000	200,000

*Hardware Capacity up to 7,000 users

**with 10GE Support

SSG 4



SSG is designed to meet the connectivity service needs of Telcos and ISPs. It is the ideal carrier-class solution for deploying large-scale broadband networks with hundreds of thousands of subscribers.

For Telcos and Internet Service Providers

Model	4330	4400
Max User License	30,000	50,000
Max VLANs	6,000*	6,000*
NIC	10 GE	10 GE

* over three interfaces

Tru'Auth 4



Tru'Auth is the ideal AAA solution for Telco, ISP and service provider environments, enabling them to effectively and quickly deploy tiered and differentiated services, across combinations of WiFi, 3G/4G and broadband networks. It can be used for provisioning and billing of dynamic and permanent user accounts and authentication, authorisation and accounting of these accounts.

For Telcos and Internet Service Providers

TA (Tru'Auth AAA)

Model	3100	3300	3400*
Subscribers	500K	2M	3M
Max Subscriber Sessions	250K	1M	1.5M
Max TPS	500	1000	2000
DB Records	500K	10M	10M

* CMS required

CMS (Central Management System)

Model	3200	3300
CDR Logs	1.5B	4.5B
DB Records	100M	1B

SG 4



SG 4 enables large venue owners to manage their own network easily with self-service account provisioning, multiple authentication methods, and traffic management.

For Large Venues

Model	4220	4410
Max User License	10,000	30,000
Max VLANs	4,000	4,000
Max Throughput	9 Gbps	9 Gbps
Max PPS	200,000	250,000

Tru'IP



A highly reliable, scalable and proven product suite for carriers that provides internet-related services for their clients. Be it with Mobile Data through Mobile core, Carrier-Grade DHCP/DNS or ANTLabs Media Controller, the Tru'IP product family enhances user experience.

For Telcos and Internet Service Providers

DDI (DHCP/DNS)

Model	4200	4300	4400
DHCP IPv4/IPv6-Prefix IP	4M	6M	10M
Active Leases	2M	3M	5M
LPS	5K	10K	100K
DNS Records	500K	2M	2.5M
QPS	> 70K	> 150K	> 300K

DDI (CMS)

Model	4300
API TPS	100
Management Instances	10
Components	API, Web Server/UI, DB

Peripherals



EVI 2200 & 2300

The Ethernet Virtual Interface (EVI) is a network device that extends a unique network interface at the remote site to provide zero-configuration networking support over a Layer 3 routed network.

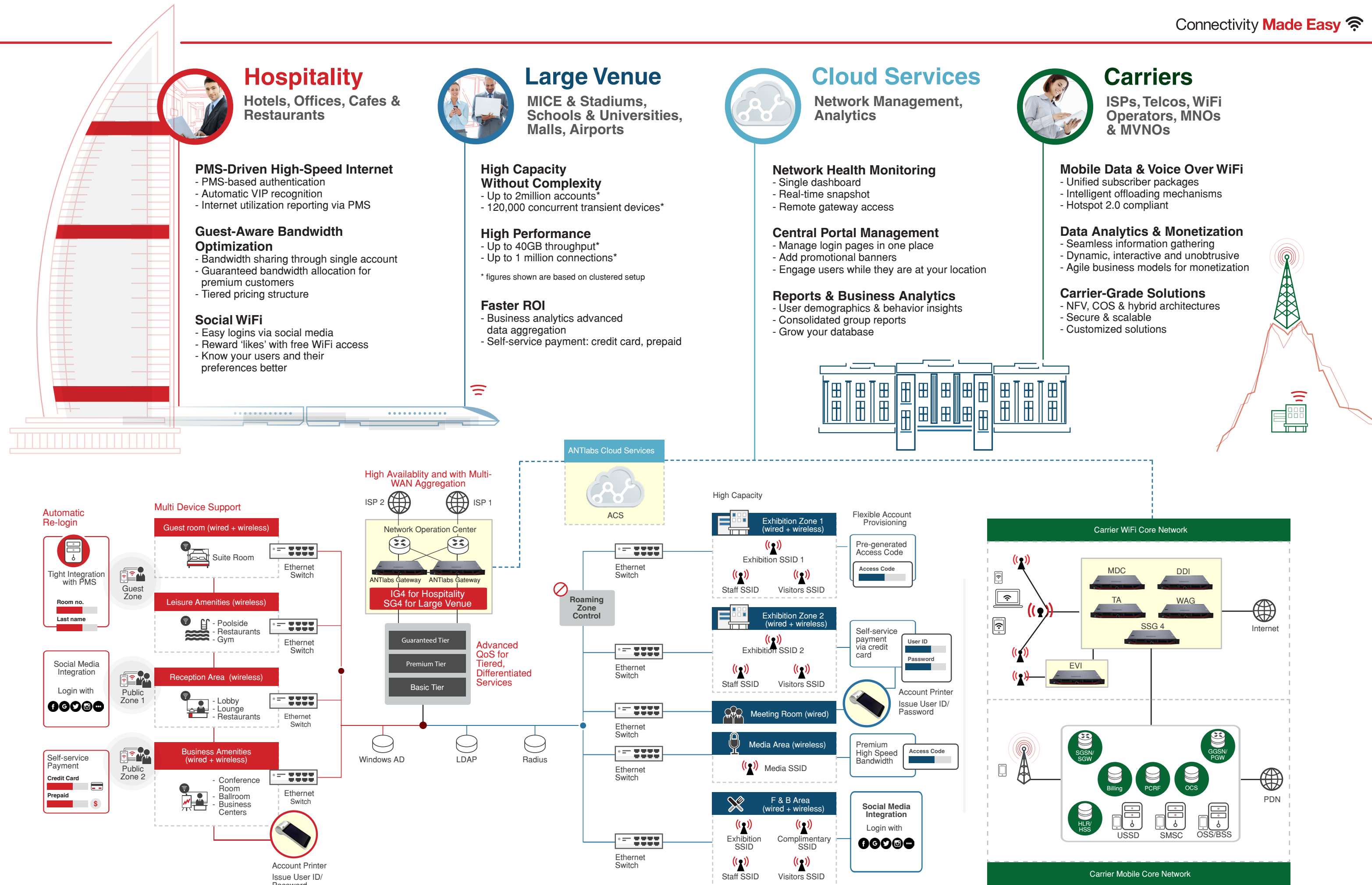


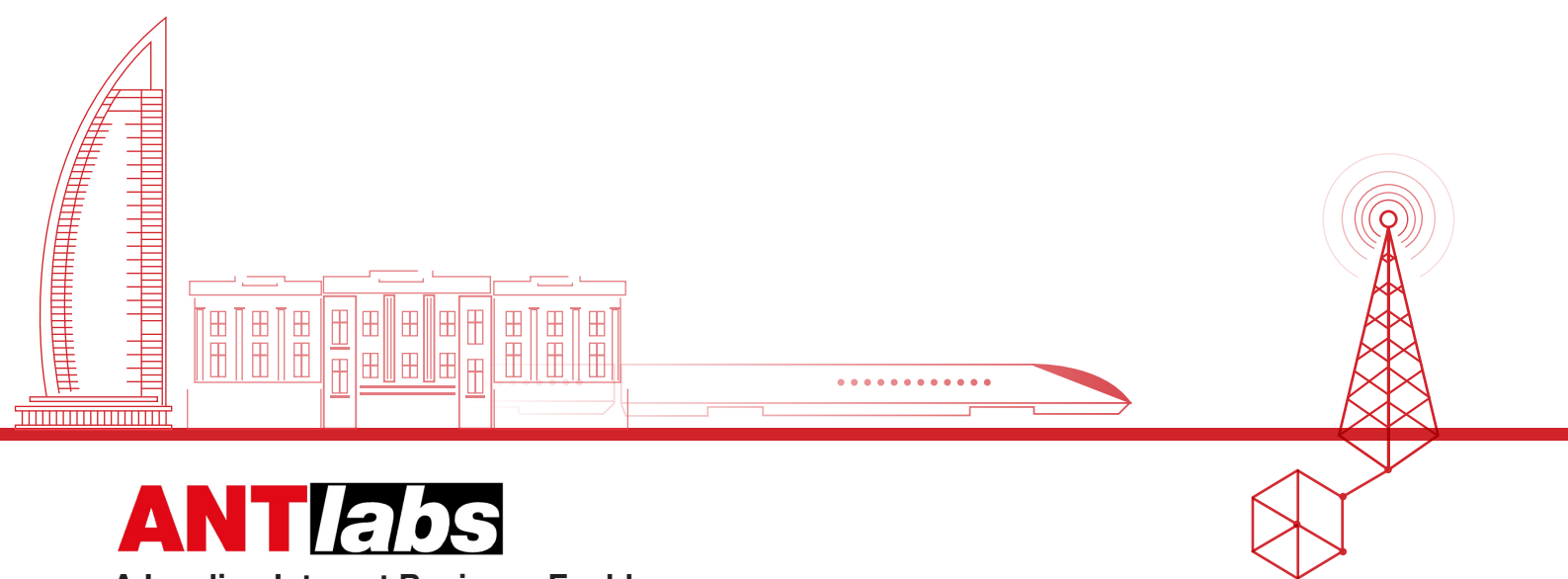
AP 3100

The user account printer provides hospitality establishments a quick and easy way to generate Internet access accounts for guest with a touch of a button.

Carrier-Grade Solutions

- NFV, COS & hybrid architectures
- Secure & scalable
- Customized solutions





ANTlabs

A Leading Internet Business Enabler

As the Asia Pacific market leader for service gateways, ANTLabs provides award-winning technology solutions for the hospitality sector, large venue network operators, and telcos.

Since 1999, our end-to-end solutions have driven viable business models and faster ROI for service providers. Our market leadership is a product of our strong in-house R&D, which focuses on transparent, vendor-neutral networking technologies while seamlessly integrating and reusing existing networks.

With more than 10 international patents in the US, Europe, Japan, China and Singapore, our technology leadership has been proven in large-scale Local Area Network and Metropolitan Area Network deployment over the years.

ANTlabs's solutions meet both current and future demands with scalability, telco-grade reliability, and enterprise-grade performance.

Hospitality

Our Hospitality solutions are a key business enabler for service institutions, such as hotels and service apartments, deploying High Speed Internet Access (HSIA) services for guests.

Large Venue

ANTlabs is one of the leading network solutions providers for visitor-based solutions in MICE and stadiums, schools and universities, shopping malls, and airports.

Carriers

Our Service Selection Gateways (SSG) and Value-Added Tru' Service Management Platforms have enabled Telcos and ISPs to enter the competitive market with great speed and confidence.

Contact Information

Tel: +65 6858 6789
Fax: +65 6487 4567

Sales Department
Tel: +65 6858-6789
E-mail: sales@antlabs.com

Technical Support
Tel: +65 6100-SUPP (+65 6100-7877)
For US Customers: +1-858-217-5147
E-mail: tech-support@antlabs.com

 <https://twitter.com/antlabs>

 <https://www.facebook.com/antlabs>

 <https://www.linkedin.com/company/antlabs>



www.antlabs.com

2020