

Connectivity **Made Easy**



ANTlabs

Delivering **Smart WiFi Services**

+ How do I launch new value-added network services?

Manage the resources effectively and maximize my returns?

How do I launch new services and scale my business with flexibility and lower costs?

My guests are bringing too many devices into my network. How do I manage them?

I allow my staff to use their own tablets and smartphones at work. How do I enable that without compromising our network security?

How do I gain insights into my customers and data assets within the network?

How do I stem the loss of revenue to OTT providers?

My subscribers are facing mobile data congestion in malls, trains and stadiums. How do I solve it?

How do I improve brand visibility and encourage customer loyalty using my WiFi service?

We understand your issues and concerns. We provide you the solution.

User-aware Services
Relevant and real-time service delivery according to customer preferences, location and context

Tiered Services & Pricing
Advanced QoS, Accounting, Pay as you Use, Multi-Tenancy Support

Reliability & High Performance
High Availability, Multi-WAN, Anti-DoS, Large User Capacity, Multi-Gbps Throughput

Seamless Access
Zero configuration IP, GW, DNS, Web Proxy with auto-login, Hotspot 2.0

Flexible Account Provisioning
RADIUS, Accounting, Roaming, Credit Card, Social Media, etc

Hospitality
Hotels, Offices, Cafes & Restaurants

PMS-Driven High-Speed Internet
- PMS-based authentication
- Automatic VIP recognition
- Internet utilization reporting via PMS

Guest-Aware Bandwidth Optimization
- Bandwidth sharing through single account
- Guaranteed bandwidth allocation for premium customers
- Tiered pricing structure

Social WiFi
- Easy logins via social media
- Reward 'likes' with free WiFi access
- Know your users and their preferences better

Large Venue
MICE & Stadiums, Schools & Universities, Malls, Airports

High Capacity Without Complexity
- Up to 90,000 concurrent users at 1 mega venue
- Deploy multiple gateways across a large venue with seamless roaming
- Pre-schedule events and customize portals in advance easily

High Performance
- Up to 30,000 concurrent devices, up to 8 WAN links per gateway
- Network resilience with High-availability

Faster ROI
- Business analytics with better visibility
- Self-service payment: credit card, prepaid

Cloud Services
Zero-Touch Provisioning, Network Management, Analytics

Network Health Monitoring
- Single dashboard, Real-time snapshot
- Remote gateway access

Central Portal Management
- Manage login pages, and Ad banners in one place
- Engage users while they are at your location

Delivering Smart WiFi Services
- Roll out new services easily to user base
- Integrated platform with single point for interfaces

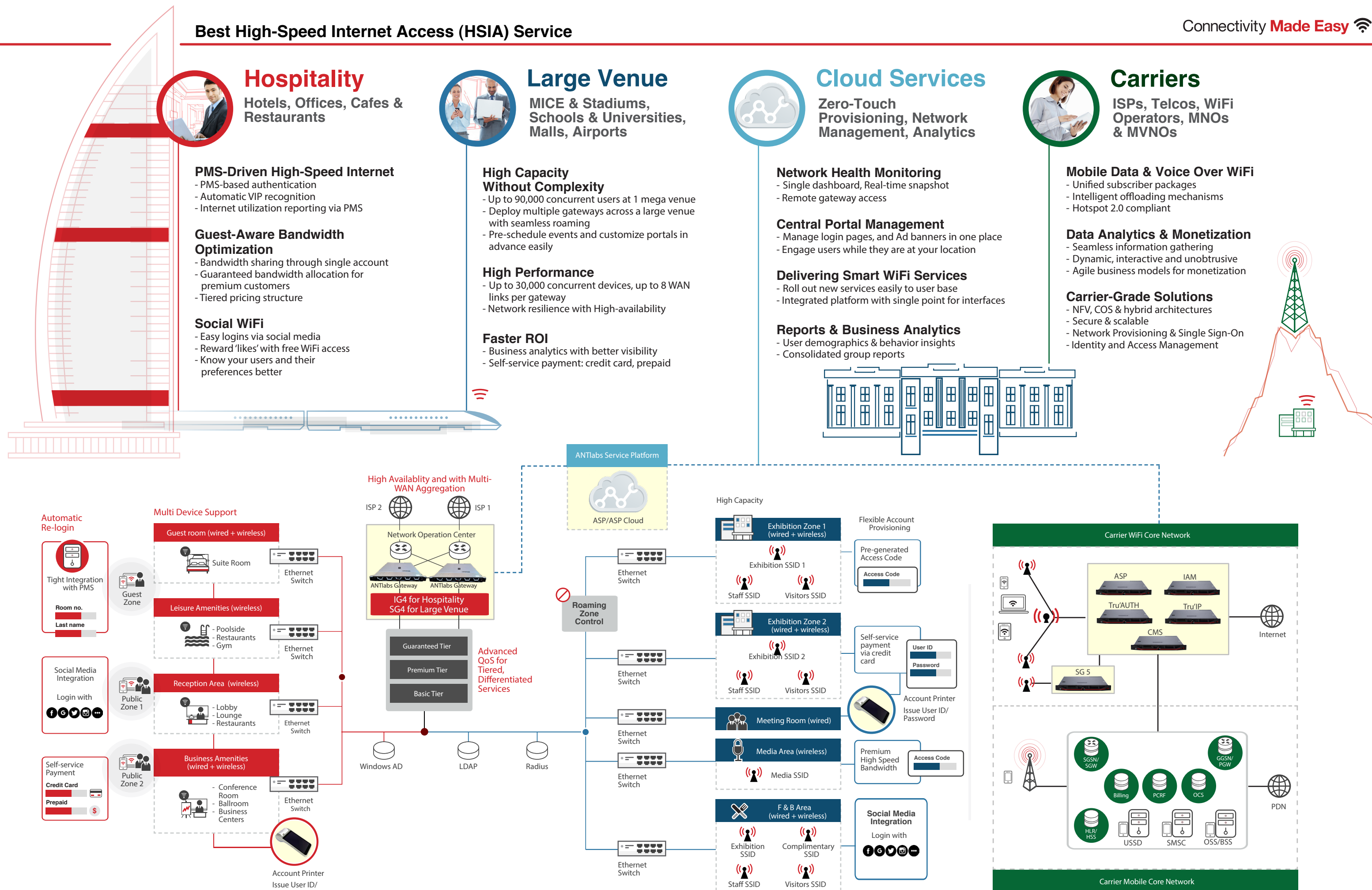
Reports & Business Analytics
- User demographics & behavior insights
- Consolidated group reports

Carriers
ISPs, Telcos, WiFi Operators, MNOs & MVNOs

Mobile Data & Voice Over WiFi
- Unified subscriber packages
- Intelligent offloading mechanisms
- Hotspot 2.0 compliant

Data Analytics & Monetization
- Seamless information gathering
- Dynamic, interactive and unobtrusive
- Agile business models for monetization

Carrier-Grade Solutions
- NFV, COS & hybrid architectures
- Secure & scalable
- Network Provisioning & Single Sign-On
- Identity and Access Management



SG 5 Express

SG 5 Express supports the needs of guest networks such as hotels, waiting rooms, business centers and F&B. It is an all-in-one gateway targeted at hospitality, has advanced bandwidth management, more authentication methods, and analytics.

For Medium to Large Hotels/Service Apartments

Model	SG Express 5100	SG Express 5200
Max User License	800	7,000*
Max VLANs	500	2,000
Max Throughput	940 Mbps	974 Mbps & 9 Gbps**

*Hardware Capacity up to 7,000 users

**with 10GE Support

SG 5 Pro

SG 5 Pro enables large venue owners to manage their own network easily with self-service account provisioning, multiple authentication methods, and traffic management. Best performance in the industry.

For Large Venues

Model	SG Pro 5400
Max User License	30,000
Max VLANs	4,000
Max Throughput	9 Gbps
Max PPS	500,000

vSG Express & Pro

Our virtualized gateways: vSG (Express & Pro) provides many options for the MSPs or System Integrators to deploy and manage their customer solutions cost-effectively, while having centralized control and ease of deployment.

For Managed Service Providers & Venue Operators

Model	vSG Express	vSG Pro
Max User License	5,000	30,000
Max VLANs	2,000	4,000
WAN	2	Up to 8

Refer to vSG Datasheets for computing resources specifications

Tru'Auth 4

Tru'Auth is the ideal AAA solution for Telco, ISP and service provider environments, enabling them to effectively and quickly deploy tiered and differentiated services, across combinations of WiFi, 3G/4G and broadband networks. It can be used for provisioning and billing of dynamic and permanent user accounts and authentication, authorisation and accounting of these accounts.

For Telcos and Internet Service Providers

TA (Tru'Auth AAA)

Model	4100	4200	4400*
Subscribers	500K	2M	3M
Max Subscriber Sessions	250K	500K/1M*	750K/1.5M*
Max TPS	500 (Radius) 500 (LDAP)	750/1500* (Radius) 750 (LDAP)	1500/3000* (Radius) 1500 (LDAP)
DB Records	1M	5M	10M

CMS (Central Management System)

Model	4200	4300
CDR Logs	1.5B	4.5B
DB Records	100M	1B

ASP / ASP Cloud

Our virtualized gateways: vSG (Express & Pro) provides many options for the MSPs or System Integrators to deploy and manage their customer solutions cost-effectively, while having centralized control and ease of deployment. ASP Cloud is a SaaS by ANTLabs, while ASP can be white-labelled and deployed in the MSPs data centre.

For Managed Service Providers & Venue Operators

Tru'IP

A highly reliable, scalable and proven product suite for carriers that provides internet-related services for their clients. Be it with Mobile Data through Mobile core, Carrier-Grade DHCP/DNS or ANTLabs Media Controller, the Tru'IP product family enhances user experience.

For Telcos and Internet Service Providers

DDI (DHCP/DNS)

Model	4200	4300	4400
DHCP IPv4/IPv6-Prefix IP	4M	6M	10M
Active Leases	2M	3M	5M
LPS	5K	10K	100K
DNS Records	500K	2M	2.5M
QPS	> 70K	> 150K	> 300K

DDI (CMS)

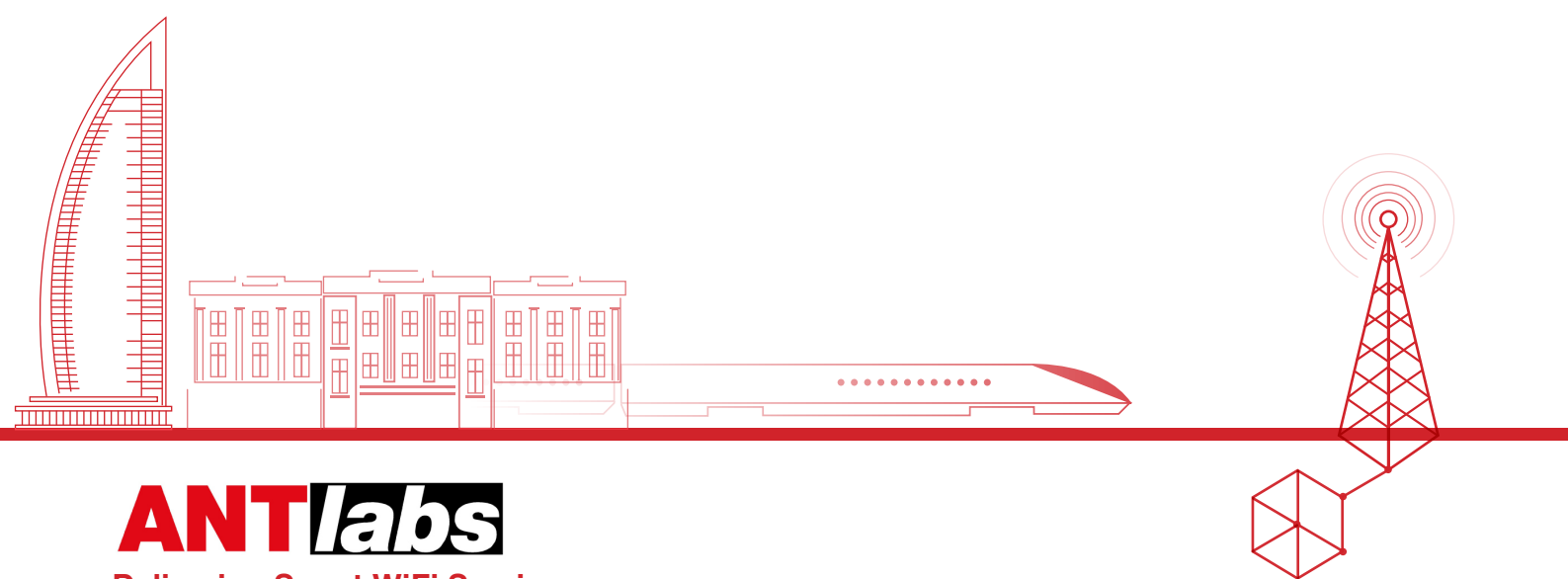
Model	4300
API TPS	100
Management Instances	10
Components	API, Web Server/UI, DB

Peripherals



AP 3100

The user account printer provides hospitality establishments a quick and easy way to generate Internet access accounts for guest with a touch of a button.



ANTlabs

Delivering Smart WiFi Services

As the Asia-Pacific innovation leader for guest networking and WiFi services, ANTLabs provides award-winning technology solutions for the managed WiFi service providers, hospitality sector, large venue network operators, and telcos.

Since 1999, our end-to-end solutions have driven viable business models and faster ROI for managed service providers (MSPs). Our market leadership is a product of our strong in-house R&D, which focuses on transparent, vendor-neutral networking technologies while seamlessly integrating and reusing existing networks.

With more than 20 international patents in the US, Europe, Japan, China and Singapore, our technology leadership has been proven in large-scale Local Area Network and Metropolitan Area Network deployment over the years.

ANTlabs's solutions meet both current and future demands with scalability, telco-grade reliability, and enterprise-grade performance.

Hospitality

Our Hospitality solutions are a key business enabler for service institutions, such as hotels and service apartments, deploying High Speed Internet Access (HSIA) services for guests. We continually innovate new services for MSPs and venue operators to create new revenue streams and operate profitably

Large Venue

ANTlabs is one of the leading network solutions providers for visitor-based solutions in MICE and stadiums, schools and universities, shopping malls, and airports.

Carriers

Our Tru' Auth and Tru'IP solutions have enabled Telcos and ISPs to enter the competitive market with great speed and confidence.

Contact Information

Tel: +65 6858 6789
Fax: +65 6487 4567

Sales Department
Tel: +65 6858-6789
E-mail: sales@antlabs.com

Technical Support
Tel: +65 6100-SUPP (+65 6100-7877)
For US Customers: +1-858-217-5147
E-mail: tech-support@antlabs.com

 <https://twitter.com/antlabs>

 <https://www.facebook.com/antlabs>

 <https://www.linkedin.com/company/antlabs>



www.antlabs.com

2022