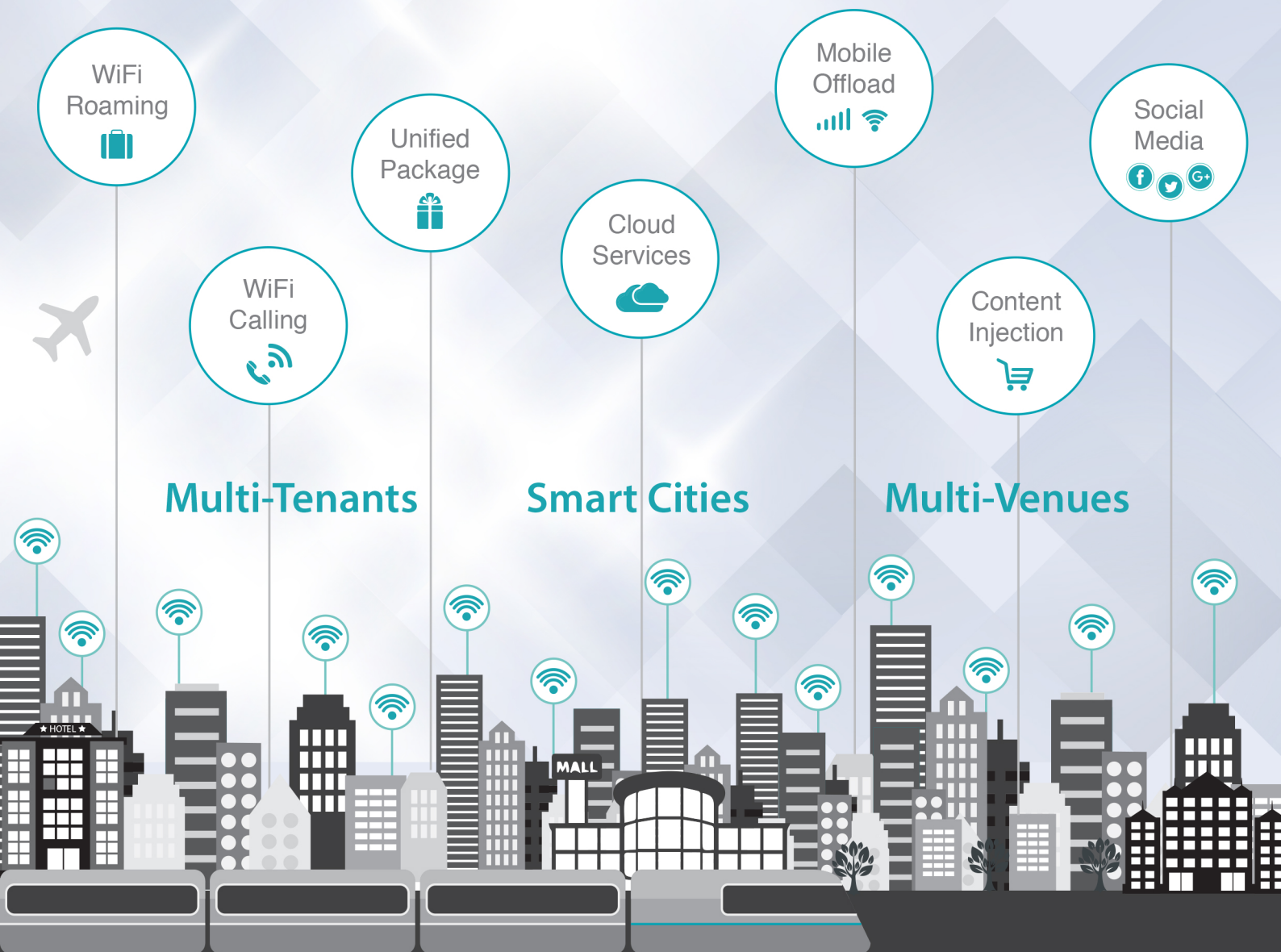




Smarter Carrier WiFi



NFV RADIUS DIAMETER PCRF PCEF Hotspot 2.0 WISPr

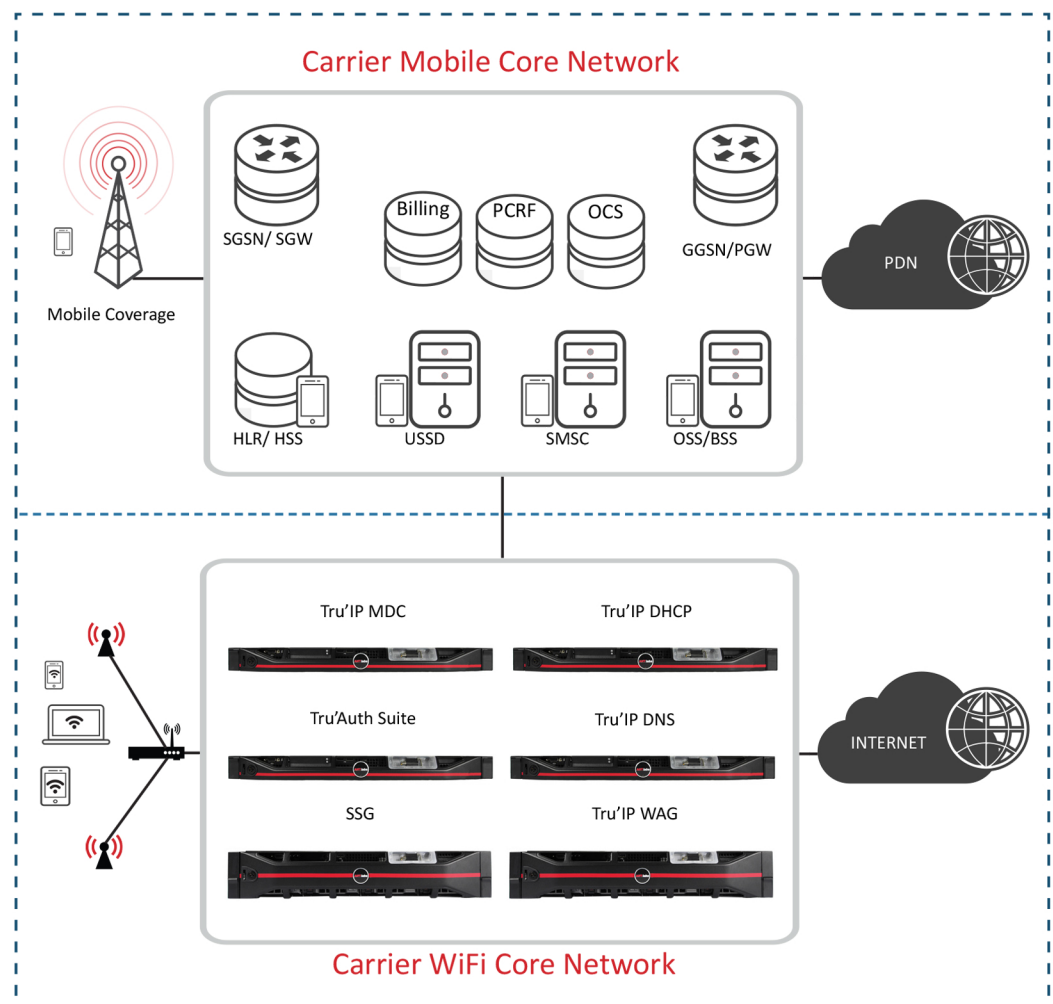
Enabling smarter customer connectivity for CSPs

ANTlabs' ecosystem of products enables carriers to exceed their customer experience by providing a seamless, secure, flexible and easily integrated solution for Carrier Wi-Fi. As a market leader for public wireless broadband in South-East Asia and Middle East, our solutions also add value to Carriers by enabling monetization of the service offerings with innovations like smart advertising, data analytics and differentiated services delivery.

We help you reduce user churn, lower TCO, and gain higher returns through "Device-Aware, Location-Aware" Captive Portals for regulation and monetization, Seamless Authentication, Seamless & Secure Mobile offloading and Wi-Fi Calling.

Our products are also vendor agnostic and integrates seamlessly with many WiFi access vendors and different Mobile Core vendors to provide a converged and easily integrated solution.

- Secure and Scalable Carrier-Grade products
- Seamless WiFi customer experience
- Personalized Carrier WiFi Solutions
- International Patented technologies
- NFV, COTS and Hybrid architectures



Smarter Carrier WiFi Products

Service Selection Gateway (SSG)

Service Selection Gateway (SSG) is a high-performance Carrier-Grade gateway product for deploying wireless and wired broadband networks as an enforcement point for policy decisions. Sporting a high-capacity, high-performance solution in a single scalable COTS hardware, ANTLabs' SSG delivers seamless user experience with its patented zero-config and Advanced QoS features.

Key Features:

- Advanced QoS
- Built-in DHCP service
- Legal Intercept
- Multi-venue Support
- PCEF

Tru'Auth Product Suite

Tru'Auth Product suite is a comprehensive product suite that enables carriers to provision subscribers, provide AAA and billing functions and integrate with existing carrier network nodes across Mobile (3G/LTE), WiFi and broadband networks. Supporting a multitude of authentication mechanisms and standards such as RADIUS, DIAMETER, IEEE 802.1x, 3GPP AAA and PCRF functions, ANTLabs' Tru'Auth product suite provides higher service availability and easy management functions.

Key Features:

- Hotspot 2.0 OSU
- 802.1x methods
- Open standard APIs
- Multiple AAA / billing
- Reporting & management

Tru'IP WAG Product Suite

Tru'IP WAG is a highly reliable, scalable and proven Wireless Access Gateway that interfaces with the Carrier's Mobile core network to provide wireless access services for its customers. The Tru'IP WAG product suite comprises of Tunnel Termination Gateway (TTG), S2a Mobility over GTP (SaMOG) and Evolved Packet Data Gateway (ePDG) that enables carriers to rollout new and innovative services on their WiFi network similar to their offerings on Mobile network or to provide a converged service.

Key Features:

- GTPv1/v2
- Trusted / Untrusted WiFi
- 802.1x Support
- TTG / SaMOG / ePDG
- RADIUS Support

Tru'IP DDI (DHCP/DNS/IPAM) Product Suite

Tru'IP DDI Product suite comprises of Tru'IP DHCP, Tru'IP DNS and Tru'IP CMS products. Tru'IP DDI Product suite is the industry's proven, high-performance, scalable and secure DDI Platform that is easy to configure, maintain and support a Carrier-Grade DHCP and DNS platform.

Key Features:

- 2000 DHCP LPS
- 140K+ DNS QPS
- IPv4/IPv6
- Reporting
- Load balancing

Tru'IP MDC (Media Delivery & Controller)

Tru'IP MDC enhances user experience and provides monetization options for carriers by providing relative, interactive and unobstructed information during users' browsing session. It works together with ANTLabs SSG Web Policy Engine to deliver rich media content in the form of dynamic ads or web page overlays based on user and location information.

Key Features:

- Media content overlay
- Context-aware injection
- Open standard APIs
- Multi-tenants
- Multi-sites

Mobile Data Offload

- Seamless and Secure Authentication methods
- Intelligent Offloading mechanisms
- Local internet breakout option
- Tunneling to Mobile Core network option
- Unified package
- Integration with HLR/HSS
- Legal Interception
- Hotspot 2.0 Compliant
- WISPr support
- EoGRE Support
- Advanced Multi-Tier QoS
- Dynamic Bandwidth Management

Actionable Data Analytics

- WiFi user data analytics
- Dynamic, Unobstructed, Interactive Web-content Overlay
- Global or Region-specific Social Media Integration
- Device-Aware, Location-Aware content injection

Privacy-protected Monetization

- Seamless collection & storage of user information
- Intelligent Information sharing
- Real-time query of user information
- Historical information sharing for usage behavioral pattern
- Various Monetization options

Agile Business Models

- Smart Cities
- Prepaid/Postpaid, Credit card, eVouchers, Scratch cards etc.
- WiFi Roaming
- Advertisements
- Shared package
- Multi-Venues, Multi-tenants wholesale model
- B2B, B2C, B2B2C models
- Shared quota, Quota Top-up, Top-up with higher speed etc.

VoWiFi / WiFi Calling

- Trusted or Untrusted WiFi networks
- S2b interface with GPRS Tunneling Protocol (GTP)
- Native dialer support

ANTLabs Cloud Service

- Deployed Network Monitoring Dashboard
- Location portal management capabilities
- Reports and Analytics capabilities
- User Demographics dashboard

Large Venues / MICE Environment

- Seamless Access
- Tiered Services & Pricing
- Flexible Account provisioning

Hospitality Industry

- PMS-Driven High-Speed Internet
- Guest-Aware Bandwidth Optimization
- Social WiFi

**International
Patented
Technologies**

**Proven
Carrier-Grade
Products**

**15+ years
of Carrier WiFi
deployments**

20 Million

AAA IP Addresses allocation

99.999%

PDP Success in 1st attempt

< 50 ms

response time

Single COTS Hardware

1.5 Million

active PDP sessions

3,000

TPS Duplicate accounting

3 Million

DHCP IP Addresses on active-active COTS

60 Million

subscriber capacity

1 Million

EAP-SIM Conservative Peer records

> 600,000

SIM Credentials cache

Single Site

500 per sec

EAP-TLS verifications with OCSP/CRL

> 1 Million

Apple devices login every day



Contact Information

Tel: +65 6858 6789
Fax: +65 6487 4567

Sales Department
Tel: +65 6858-6789
E-mail: carrier-sales@antlabs.com

Technical Support
Tel: +65 6100-SUPP (+65 6100-7877)
For US Customers: +1-858-217-5147
E-mail: tech-support@antlabs.com



<https://twitter.com/antlabs>

<https://plus.google.com/+Antlabs/posts>

<https://www.facebook.com/antlabs>

<https://www.linkedin.com/company/antlabs>



www.antlabs.com

2018