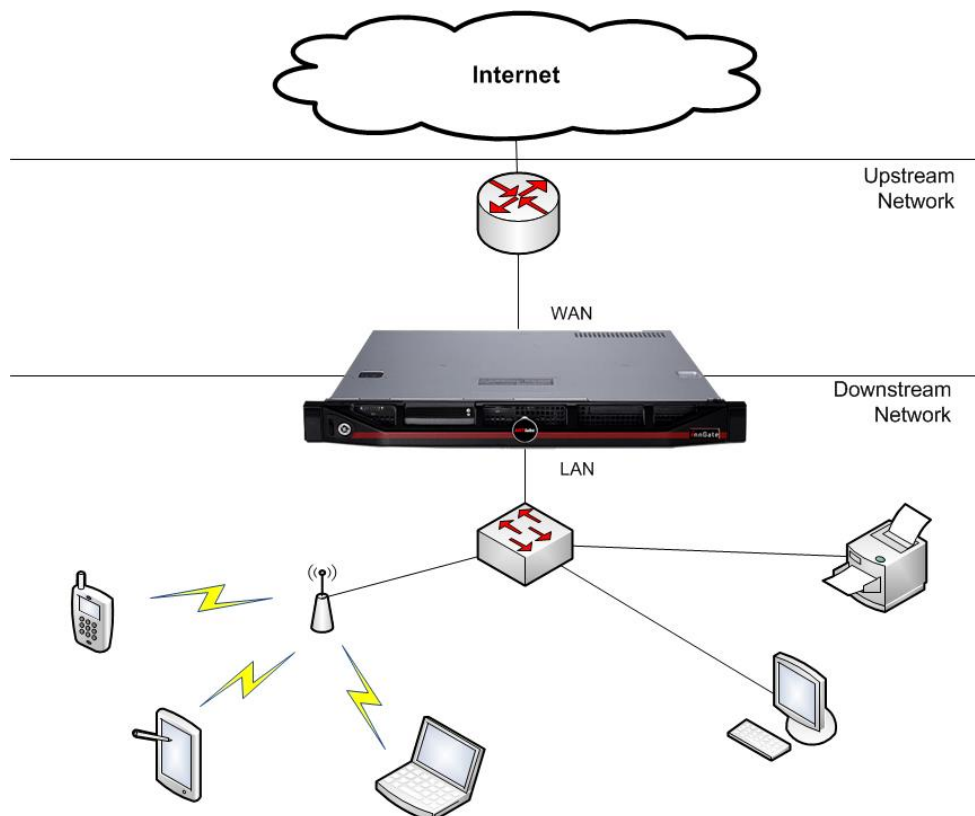


How do I connect the gateway to the network

Installation and connection

Deploy the gateway in the network following this simple network diagram below:



Some of the switches and connectors shown in images above are described here:

1. LAN – All clients to be managed by the gateway are placed on the network, which is connected to this port.
2. WAN – This port connects the gateway to the rest of the network for client traffic to pass through.
3. OPT1 – Used to connect two gateways in a High Availability (HA) setup. Both OPT1 have to be connected to the same HA VLAN. This will be used for the HA heartbeat signals between the gateways.
4. OPT2 – Used as WAN interface 2 in Multi-WAN Feature.

1. Connect your laptop/PC to LAN port of the gateway
2. From Admin GUI:
 - a. Open a web browser from your laptop/PC and type "<https://ezxcess.antlabs.com/admin/>" in the address bar.

Default account:

User ID : root

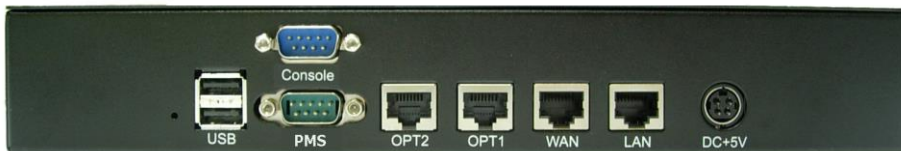
Password: admin

You are recommended to change the password.



Additional Note:

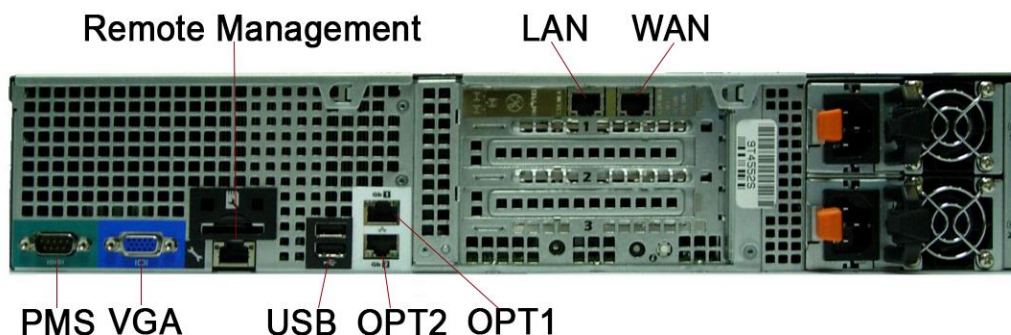
M-Series 3.10



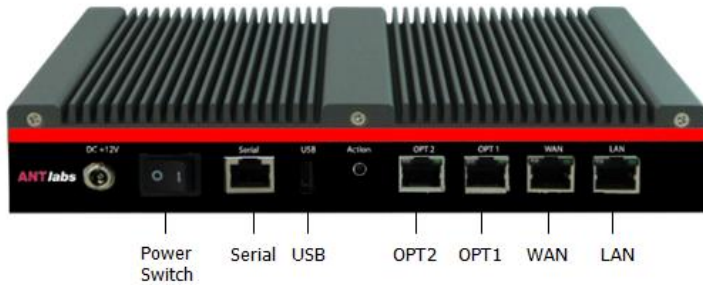
E-Series 3.10



G-Series 3.10



IG3100



SG4

