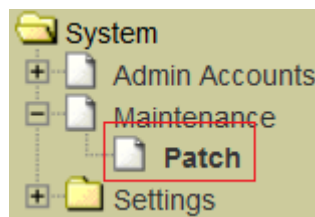


## How do I update the gateway to the latest software version

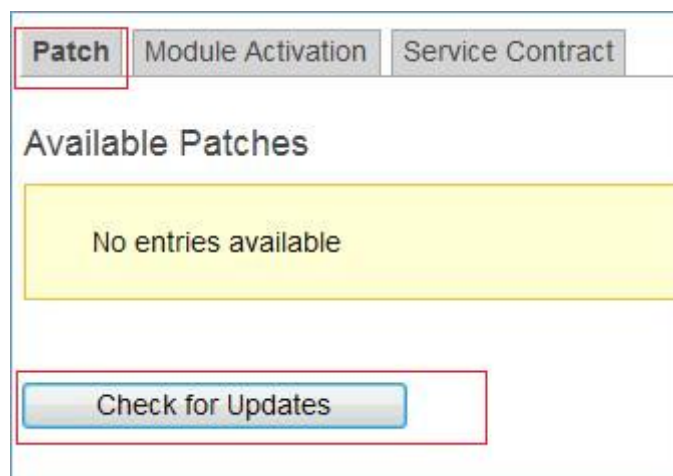
### Configure at system

Before using the gateway, it is recommended to patch it to the latest patch. Administrator can use the online patch download feature to get the available patch. Make sure the gateway is connected to Internet before using this feature. To do online patch download, follow these steps:

1. Login to Admin GUI: Go to System > Maintenance > Patch.



2. Click on button "Check for Updates" to check if there are new patches available to download.



- If there are new patches available to download, they will be listed on the page. Click "Download All" to download all available patches from the server.

Patch Module Activation Service Contract

---

Available Patches @ Thu, 06 Nov 2014 12:03:08

Date	Patch name	Checksum	Status
22/08/2014 06:00PM	52.InnGate300_base-sys-antha-20140815-01.pkg	8d31f361ad6b91e06278d451905ae537	Not Started
31/10/2014 07:00PM	53.InnGate300_base-sys-sslcert-20141030-01.pkg	77c41bae354d208f7bf9845df9a71592	Not Started

Check for Updates Download All

- After all patches are downloaded, click button "Install Next Patch" to install the next patch.

Patch Module Activation Service Contract

---

Available Patches @ Thu, 06 Nov 2014 12:03:08

Date	Patch name	Checksum	Status
22/08/2014 06:00PM	52.InnGate300_base-sys-antha-20140815-01.pkg	8d31f361ad6b91e06278d451905ae537	Downloaded
31/10/2014 07:00PM	53.InnGate300_base-sys-sslcert-20141030-01.pkg	77c41bae354d208f7bf9845df9a71592	Downloaded

Check for Updates Download All Install Next Patch

Patch Module Activation Service Contract

---

- Upgrading Name Service script and configuration ... [OK]
- Update successful